



SX1 HIGH TEMPERATURE QUARTZ CRYSTAL

30 kHz to 250 MHz

High Temperature (up to 260°C)

DESCRIPTION

Statek's SX crystals are designed to achieve operation at temperatures up to and including 260°C. Each crystal is pre-qualified before assembly in TO-39 package through electrical tests and characterization over temperature.

FEATURES

- High temperature operation up to 260°C
- Double hermetic seal for ultimate reliability
- Excellent stability over wide temperature ranges

APPLICATIONS

- Downhole instrumentation
- Rotary shaft sensor
- Underground boring tools
- MWD (measurement while drilling)
- Avionics applications
- Engine Control

SPECIFICATIONS

Specifications are typical at 25°C unless otherwise noted. Specifications are subject to change without notice.

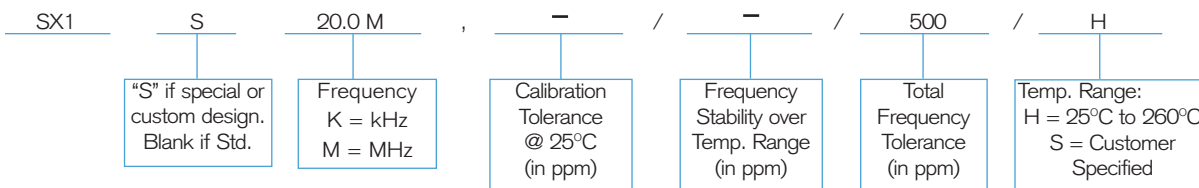
| | |
|----------------------------------|---------------------------------|
| Frequency Range ¹ | 30 kHz to 250 MHz |
| Calibration Tolerance required | ± 20 ppm or tighter as required |
| Operating Temperature Range | -55°C up to +260°C |
| Aging, first year | 5 ppm at 25°C |
| Shock, survival ² | 5,000 g, 0.3 ms, 1/2 sine |
| Vibration, survival ³ | 20 g, 10-2,000 Hz swept sine |

1. Contact factory for available frequencies within this range.
2. Higher shock version available.
3. Per MIL-STD-202G, Method 204D, Condition D. Random vibration testing also available.

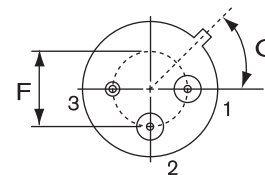
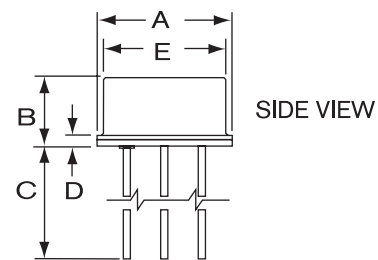
PACKAGING

SX1 - Tray Pack (Standard)

HOW TO ORDER SX1 CRYSTALS



PACKAGE DIMENSIONS



- Pin:
- 1 - Crystal
 - 2 - Crystal
 - 3 - Ground / Case

| DIM | inches | mm |
|-----|-----------|-----------|
| A | 0.380 MAX | 9.65 MAX |
| B | 0.185 MAX | 4.70 MAX |
| C | 0.500 MIN | 12.70 MIN |
| D | 0.029 | 0.74 |
| E | 0.326 MAX | 8.28 MAX |
| F | 0.200 REF | 5.08 REF |
| G | 45° | 45° |

- Note:
1. All metal parts gold plated
 2. Leads are 0.019 in. [0.48 mm] MAX.

10194 Rev A

